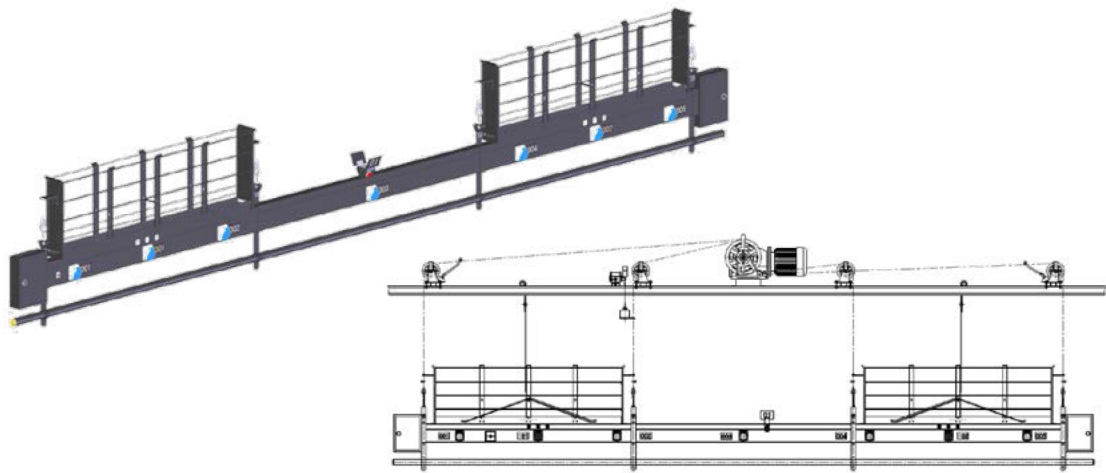


IV型水平吊杆
IV Horizontal Hoist
型号(Model): GSPIV



北京星光影视设备科技股份有限公司
Beijing Xingguang Film & TV Equipment Technologies Co., Ltd.
电话TEL: 010-60251534 60242258 60241811 60251752/4
售后服务热线: 010-60253438
After-sales Service Hotline: 010-60253438
网址URL: http://www.starlighting.com.cn



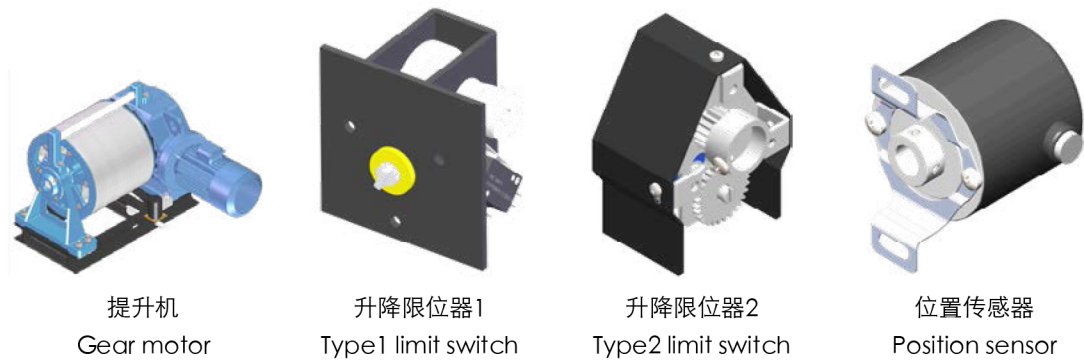
安装形式 Installation

特点概述

- ★ 采用型材和圆管相结合的设计，造型美观，重量轻，承载力高；
- ★ 插座体采用日字形铝型材，强弱电分开布置，安全，抗干扰；
- ★ 可配置多达6路的强电回路（插座可按客户要求选型）、4路DMX512信号和以太网，适用于多种应用场合；
- ★ 配置多种安全保护装置，确保吊杆运行安全可靠；
- ★ 可配置高精度位置传感器，实现吊杆精确定位。

Features Overview

- ★ The combination of profile and pipe make the appearance attractive, lightweight and high load-bearing capacity.
- ★ The aluminum profile with B-Type is adopted for the socket. The power cable and signal cable is separately arranged to resist interference, and avoid risk of electric shock.
- ★ Up to 6 power sockets, 4 DMX512 signal and EtherNet can be installed. The type of power sockets can be determined by the clients. It is suitable for various of applications.
- ★ There are variety of safety protection devices to guarantee that the operation is safe and reliable.
- ★ The high accuracy position sensor is adopted which realizes the accurate positioning.



产品规格 Product Specification

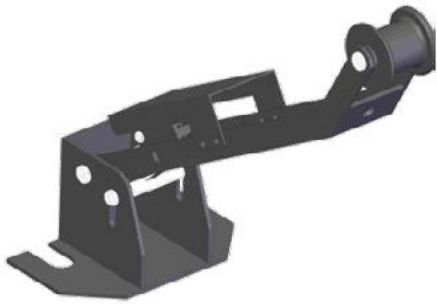
主要参数 Technical Data										
型号 Model		GSPIV-								
		2000	2500	3000	3500	4000	4500	5000	5500	6000
吊杆长度	Length (m)	2	2.5	3	3.5	4	4.5	5	5.5	6
自重	Self-weight (kg)	32	40	48	56	64	72	80	88	96.5
减速电机类型 Type of gear motor		蜗轮蜗杆减速机、斜齿-螺旋锥齿轮减速机（配双制动电机+手动释放）两种可选 Worm-gear motor, helical-bevel gear motor (with double brake motor + manual release)								
吊点数量	QTY of suspension points	4								
提升高度	Moving range (m)	8~22								
提升速度	Speed (m/min)	10								
最大载荷	Maximum load (kg)	400/600/800/1000								
电机功率	Motor power (kw)	1.5/2.2/3/4								
滚筒类型	Drum type	单层缠绕（适用于8m-10m）/多层缠绕（适用于10m-22m） Single-layer winding(for 8m-10m)/Double-layer winding （for 10m-22m）								
钢丝绳直径（3吊点） Diameter of wire rope (3 suspension points)		400Kg/φ4.8mm；600Kg/φ6.0mm；800Kg/φ7.0mm；1000Kg/φ8.0mm								
钢丝绳直径（4吊点） Diameter of wire rope (4 suspension points)		400Kg/φ4.2mm；600Kg/φ5.2mm；800Kg/φ6.0mm；1000Kg/φ7.0mm								
安全装置 Safety device		防冲顶限位器、松断绳限位器、升降限位器、位置传感器 Anti-collision limiting stopper,loose-rope stopper,limit switch,position sensor.								
电气配置 Electrical configuration		强电回路4路；DMX512 4路，以太网1路 Power X 4; DMX512 X 4; EtherNet X 1				强电回路6路；DMX512 4路，以太网1路 Power X 6; DMX512 X 4; EtherNet X 1				
备注 Remarks		提升机等图片仅供参考，请以实物为准；上述自重含强电回路为6路且层高12米时扁缆的重量。 Pictures for reference only.Goods in kind prevail. The self-weight including flat cables represents the weight on the occasion of 6 power loops and the grid height of 12 meters.								



防冲顶限位器
Anti-collision limiting stopper



滑轮
Pulley



松断绳限位器
Loose-rope stopper